

HUNTERS®

HERE TO GET *you* THERE



The Crossing

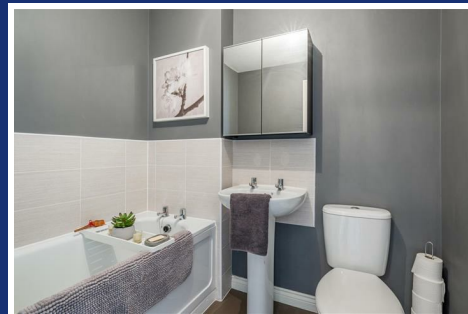
Kingswinford, West Midlands, DY6 7AL

 3  2  1  B



The Crossing

Kingswinford, West Midlands, DY6 7AL



TO THE FRONT OF THE PROPERTY

To the front of the property there is a tarmacadam double driveway, block paved pathway leading to the front door and a gate to side access leading to the rear of the garden.

ENTRANCE HALL

With a door leading from the front, doors leading to various rooms, stairs to first floor landing and a central heating radiator.

KITCHEN

16'11" x 7'10" max (5.17 x 2.39 max)

With a door leading from the entrance hall, fitted with a range of wall and base units, gas hob, electric oven, extractor hood, tiled splash back one and a half sink and drainer, cupboard housing boiler, space for appliances and a central heating radiator.

LOUNGE

14'2" x 12'10" (4.33 x 3.92)

With a door leading from the entrance hall, double glazed French doors to rear and a central heating radiator.

WC

With a door leading from the entrance hall, WC, wash hand basin with tiled splash back, extractor fan and a central heating radiator.

FIRST FLOOR LANDING

With stairs leading from the entrance hall, doors leading to various rooms, double glazed window to front, central heating radiator and stairs leading to the second floor.

BEDROOM TWO

12'8" x 12'5" (3.88 x 3.79)

With a door leading from the first floor landing, double glazed window to rear and a central heating radiator.

BEDROOM THREE

10'10" x 6'2" (3.32 x 1.90)

With a door leading from the first floor landing, double glazed window to front and a central heating radiator.

FAMILY BATHROOM

With a door leading from the first floor landing, bath unit & wash hand basin with tiled surround, WC, extractor fan and a central heating radiator.

SECOND FLOOR LANDING

With stairs leading from the first floor, door leading to bedroom one and a central heating radiator.

BEDROOM ONE

12'8" x 11'6" (3.88 x 3.51)

With a door leading from the second floor landing, Velux skylights, opening to storage space, door to en suite, airing cupboard and a central heating radiator.

EN SUITE

With a door leading from bedroom one, shower unit with tiled surround, WC, wash hand basin, double glazed dormer window to front, extractor fan and a central heating radiator.

GARDEN

With a door leading from the French doors and a gate to rear, block paved patio area with chipping stone borders leading to a grass lawn beyond.



